



KPC-HD38M

2.1 Mega Pixel **Smallest** Square Camera



ATM |
 Building Entrance |
 Sidewalk |
 Parking Lot |
 Airport |

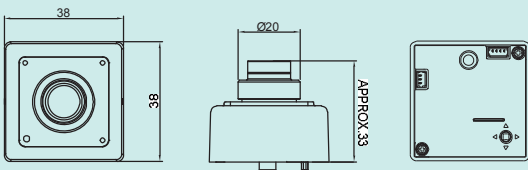


• Features

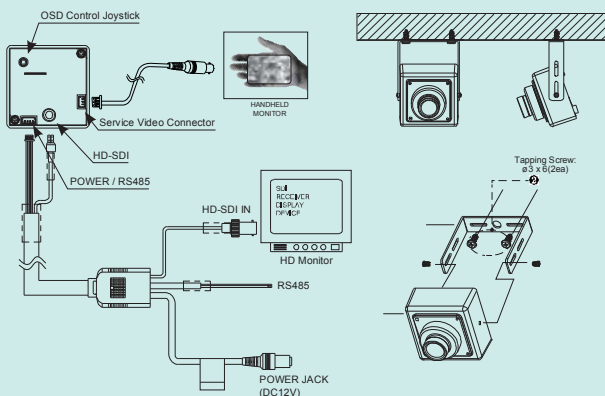
2.1 Mega Pixel, 1/3" Exmor SONY CMOS
 1080p(1920x1080)@30fps (Standard)
 Min. Illumination of 0.1 Lux / F2.0
 f=3.6, 6, 8mm Board Lens
 Digital Day & Night
 WDR, 3DNR, BLC, AGC, DSS
 Privacy Masking, Motion Detection / Convenient OSD
 HD-SDI (BNC) / Service Video Output
 RS-485 Communication

• Dimensions

(Unit : mm)



• Connection Diagram



• Specifications

Model Name	KPC-HD38M
Image Device	2.1 Mega Pixel, 1/3" Exmor SONY CMOS
Video Output mode	HD-SDI : 1080p@30fps, 720p@60fps TV Out : NTSC / PAL Selectable
Effective Pixels	1984(H) x 1105(V)
Unit cell size	2.8(H) x 2.8(V)
S/N Ratio	More than 50 dB (AGC Off)
Min. Illumination	0.1 Lux / F2.0
Video output	HD-SDI / 1.0 Vp-p Composite (75Ω)
Lens	f=3.6, 6, 8mm Board Lens
Shutter speed	Auto / Manual Selectable
WDR	OFF / WDR / BLC Selectable
BLC	OFF / WDR / BLC Selectable
AGC	Off / 0~23 dB
3DNR	OFF / LOW / MID / HIGH
White Balance	AUTO / MANUAL / PUSH-LOCK
Digital Zoom Ratio	1x ~ 20x
Digital Slow Shutter	Off, x2, x3, x4
Privacy Masking	On / Off
Motion Detection	On / Off
Day & Night	Digital Day & Night (AUTO / COLOR / BW)
OSD	Built-in with Joystick
Operating Temperature	14°F~112°F (-10°C~+50°C)
Storage Temperature	-4°F~140°F (-20°C~+60°C)
Power Consumption	DC12V (±10%) Max. 160 mA
Dimension	38(H) x 38(W)
Weight	Approx. 131 g